

Southwest Airlines Vacations Ski Training



Southwest Airlines Benefit

**Skis and Snowboards
Fly Free!**



Product Overview

- **Destinations**
 - Colorado
 - Utah
 - Lake Tahoe
 - New Mexico



Product Overview- Equipment

- **Black Tie Ski Rental and Delivery**
 - Suited for skiers of all abilities
 - Two equipment package options:
 - Boots and Board
 - Skis, Boots, and Poles
 - Experts deliver all of your equipment directly to your hotel or condo
 - Excellent opportunity and book your rental equipment early



Product Overview- Equipment

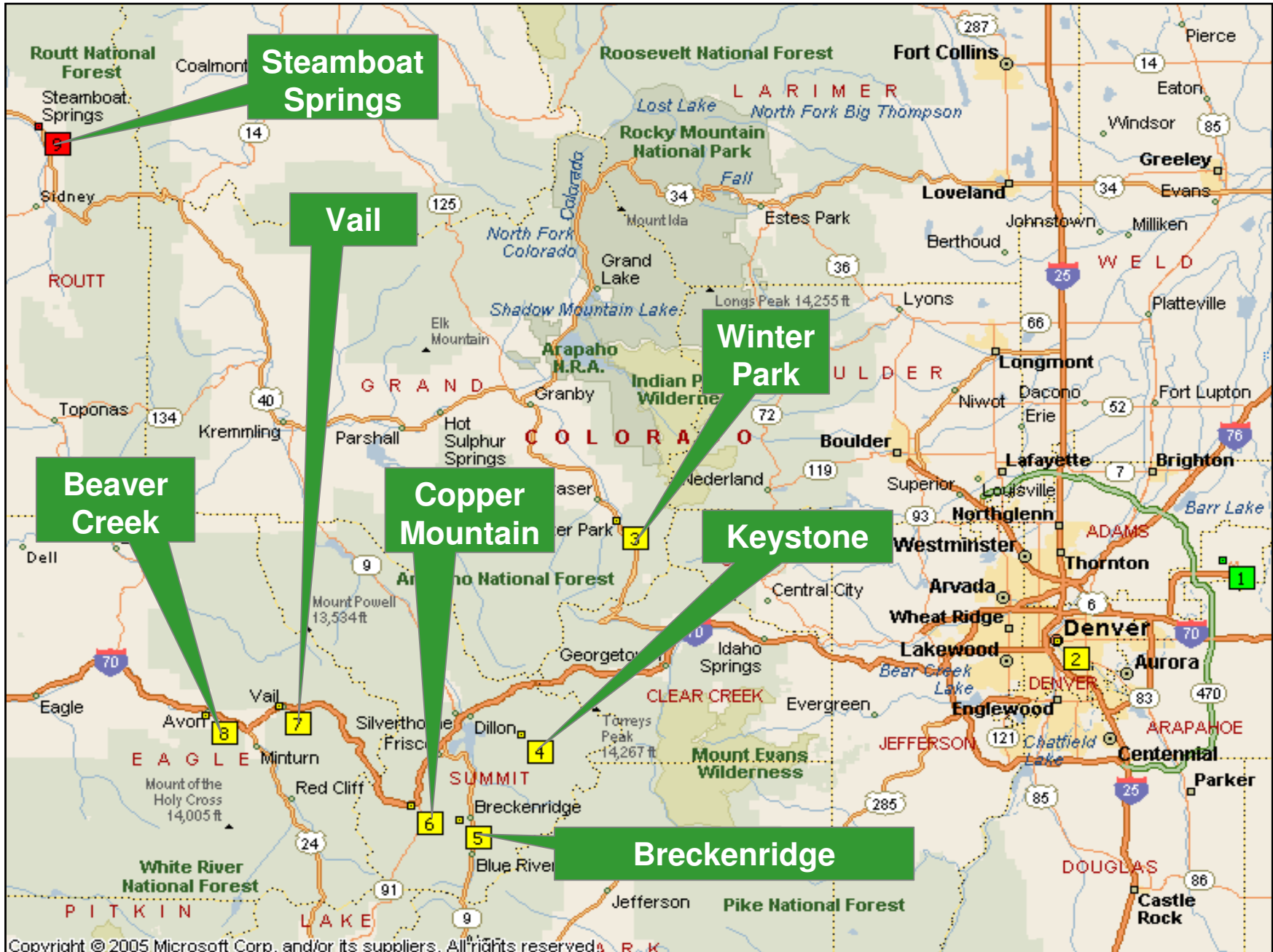
- **Christy Sports Rental and Delivery**
 - Suited for skiers of all abilities
 - Two equipment package options:
 - Boots and Board
 - Skis, Boots, and Poles
 - Experts deliver all of your equipment directly to your hotel or condo
 - Rental Experts are on hand to help size your boots and snowboard for the best fit
 - Early reservations help ensure the equipment will be available for you upon arrival



Colorado

- **Denver – 26 miles from DEN**
- **Winter Park – 92 miles from DEN**
- **Keystone – 95 miles from DEN**
- **Breckenridge – 105 miles from DEN**
- **Copper Mountain – 102 miles from DEN**
- **Vail – 121 miles from DEN**
- **Beaver Creek – 130 miles from DEN**
- **Steamboat Springs – 180 miles from DEN**



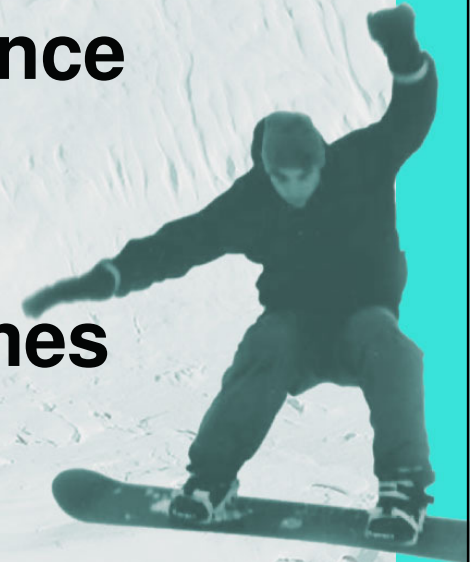


Copyright © 2005 Microsoft Corp. and/or its suppliers. All rights reserved.



Winter Park Hotels

- **Beaver Village Condominiums**
- **Hi Country Haus**
- **Iron Horse Resort**
- **The Vintage Resort & Conference Center**
- **Winter Park Mountain Lodge**
- **Winter Park Premier Townhomes**
- **Zephyr Mountain Lodge**



Winter Park Features

- **Round Trip Transfers From DEN**
- **2 to 8 Day Winter Park Resort Lift Tickets**
- **Discount Ski Rental Options using Christy's Sports Rental Equipment**



Keystone Hotels

- **Evergreen Condominiums**
- **Gateway Mountain Lodge**
- **Keystone Lodge & Spa, a RockResort**
- **Northstar Townhomes**
- **River Run Condominiums**
- **Slopeside Condominiums**
- **The Forest Condos**
- **The Inn at Keystone**



Keystone Info

- **Keystone – Good for the 1st time ski vacation**
- **Self Contained**
- **Has an efficient, color coded ski shuttle system**
- **Great for families**
- **Everyone works for Keystone**
- **Website: vailresorts.com**



Keystone Features

- **2 to 10 day interchangeable Lift tickets good at Keystone and Breckenridge**
- **Round Trip Transfers From DEN**
- **Discount Ski Rental Options using Christy's Sports Rental Equipment**
 - **Lift tickets maybe good for at least one day ski at Vail and/or Beaver Creek. Keystone offers night time skiing.**



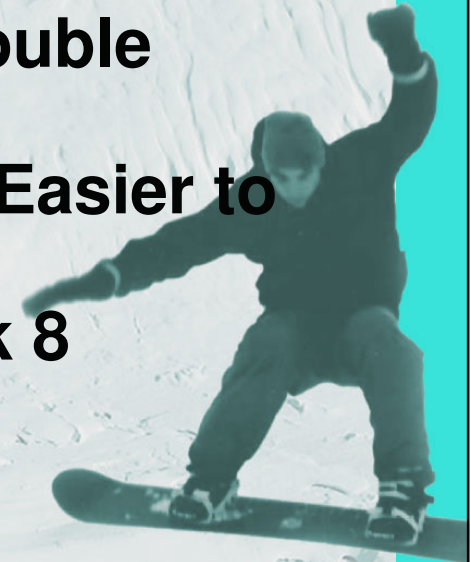
Breckenridge Hotels

- **Beaver Run Resort & Conference Center**
- **Breckenridge Mountain Lodge**
- **Main Street Station & Junction**
- **Mountain Thunder Lodge**
- **One Breckenridge Place**
- **Park Ave / Main Street Condos**
- **Pine Ridge Condominiums**
- **ResortQuest River Mountain Lodge**
- **Riverbend**
- **Sawmill Creek**
- **The Great Divide Lodge**
- **The Village at Breckenridge Resort**
- **Trails End**



Breckenridge Info

- **Breckenridge – Perfect Mountain Town**
- **Highest lift terrain**
- **Base of Peaks 7 are 80 to 90 condo units with limited retail**
- **New Lake Chutes/ Snow White (Double Diamond)**
- **Breckenridge Connect Gondola – Easier to get to mountain**
- **Parking lot located at base of peak 8**
- **Website: vailresorts.com**



Breckenridge Features

- **2 to 10 day interchangeable Lift tickets good at Keystone and Breckenridge**
- **Round Trip Transfers From DEN**
- **Discount Ski Rental Options using Christy's Sports Rental Equipment**



Copper Mountain Hotels

- **Copper Springs Lodge**
- **Passage Point**
- **54 Peaks**
- **Mountain Plaza**
- **Village Square**
- **Wheeler Village**



Copper Mountain Features

- **2 to 7 day Copper Mountain Ski Area**
 - **Beeline Lift Tickets**
- **Round Trip Transfers From DEN**
- **Discount Ski Rental Options using Christy's Sports Rental Equipment**



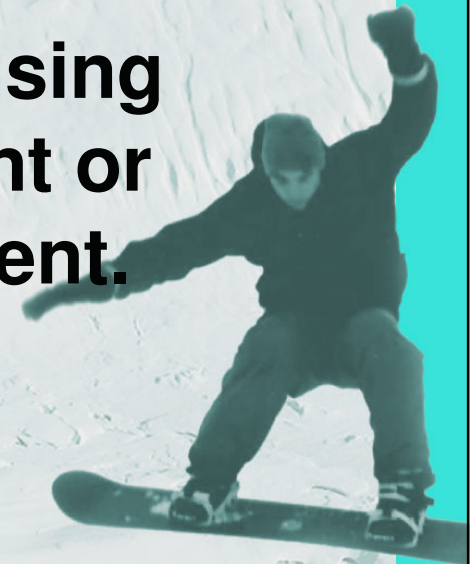
Vail Hotels

- **Austria Haus**
- **Enzian Condominiums**
- **Evergreen Lodge**
- **Holiday Inn Apex Vail**
- **Lion Square Lodge**
- **Lionshead Condominiums**
- **The Lodge at Vail, a RockResort**
- **Vail Cascade Resort & Spa**
- **Vail Racquet Club Townhomes & Condos**



Vail Features

- **2 to 10 day interchangeable Lift tickets good at Vail & Beaver Creek**
- **Round Trip Transfers From DEN**
- **Discount Ski Rental Options using Black Tie Ski Rental Equipment or Christy Sports Rental Equipment.**



Beaver Creek Hotels

- **Arrowhead Village Condominiums**
- **Avon Condominiums**
- **Beaver Creek Lodge**
- **Park Hyatt Beaver Creek Resort & Spa**
- **The Charter at Beaver Creek**
- **The Ritz-Carlton, Bachelor Gulch**
- **The Lodge and Spa at Cordillera, a RockResort (Several Miles West of Beaver Creek)**



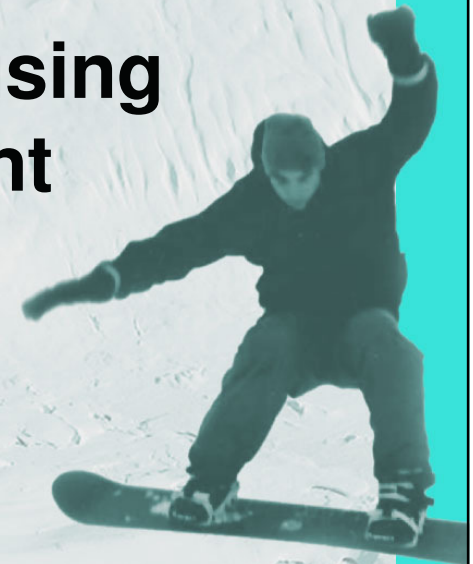
Beaver Creek Info

- **Beaver Creek – Customer Service Oriented**
- **80% of accommodations Ski in/ Ski out**
- **8,000 acres groomed every night**
- **Village to Village Experience (meaning you can ski from one village to another village)**
- **New Ski school gondola**
- **New Double Black Stone Creek Chutes located off of Rose bowl**
- **River Express Gondola (Avon) take to Beaver Creek landing**
- **Website: vailresorts.com**



Beaver Creek Features

- **2 to 10 day interchangeable Lift tickets good at Vail & Beaver Creek**
- **Round Trip Transfers From DEN**
- **Discount Ski Rental Options using Black Tie Ski Rental Equipment**



Steamboat Springs Hotels

- Canyon Creek
- Holiday Inn Steamboat
- Shadow Run
- Sheraton Steamboat Resort
- Steamboat Grand Resort Hotel & Conference Center
- Storm Meadows Christie Base
- Storm Meadows Club Condominiums
- The Lodge at Steamboat
- Thunderhead Lodge
- Timber Run



Steamboat Springs Info

- **Steamboat has 70% drier snow. Unfortunately that means no snowball fights.**
- **Steamboat also has 75 bars and restaurant**
- **Skiing in Steamboat:**
- **They have legendary tree skiing**
- **They have enormous uphill capacity (NO LINES)**
- **14% beginner runs**
- **42% intermediate runs**
- **44% difficult runs**
- **Website: steamboat.com**



Steamboat Springs News & Updates

\$16 million in on-mountain improvements for 07/08 as part of the “Steamboat Unbridled” plan include the new 6 passenger chairlift: Christie Peak Express, significant headwall terrain upgrades, snowmaking advances, parking facilities, and enhanced trail signage. Future plans include leveling Ski Times Square to put in a new ski village area; some demolition may start next summer.



Steamboat Springs Features

- **1 to 7 Day Steamboat Ski & Resort Lift Tickets**
- **Round Trip Transfers From DEN**
- **Discount Ski Rental Options using Christy's Sports Rental Equipment**



Utah

- **Salt Lake City – 7 miles from SLC**
- **Snowbird – 31 Miles from SLC**
- **Solitude – 34 Miles from SLC**
- **Park City & The Canyons – 37 miles from SLC**



SLC Super Pass

The Ski Salt Lake Super Pass entitles adult skiers and riders to interchangeable lift tickets at four local resorts:

- **Alta**
- **Brighton**
- **Snowbird**
- **Solitude**

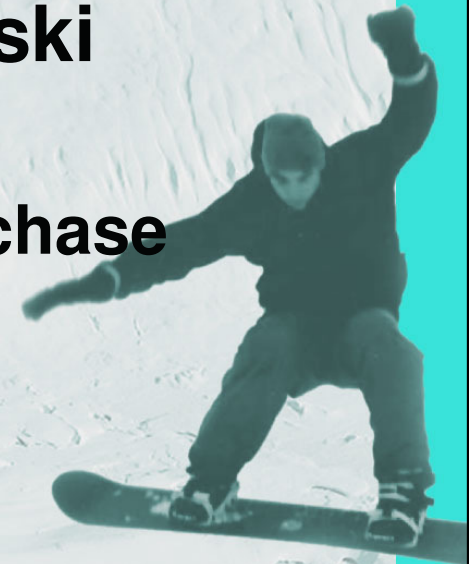
Valid for Customers that stay in the Salt Lake City, Alta, Brighton, Snowbird, and Solitude area hotels.



SLC Super Pass

The Super Pass also entitles pass holders to roundtrip travel on UTA ski buses, city buses, and light-rail. Only valid during ski season while ski resort is open.

- Available only with lodging purchase**



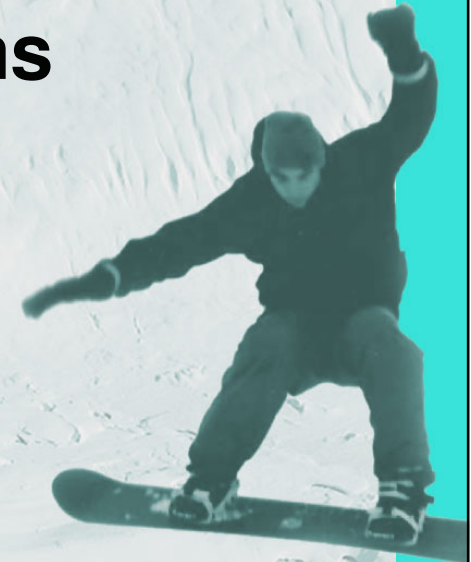
Salt Lake City Hotels

- **Crystal Inn - Downtown**
- **Crystal Inn Mid Valley**
- **Grand America Hotel**
- **Homestead Studio Suites - Mid Valley**
- **Homestead Studio Suites - Sugarhouse**
- **Little America Hotel**



Park City Hotels

- **All Seasons Condominiums**
- **Bear Hollow Village**
- **Best Western Landmark**
- **Carriage House Condominiums**
- **Crestview Condominiums**
- **Fox Pointe at Redstone**
- **Park Avenue**
- **Park City Marriott**



Park City Hotels Continued

- **PowderWood Resort**
- **Silver King Hotel**
- **Lodge at the Mountain Village**
- **The Park City Peaks Hotel**
- **The Yarrow Resort Hotel**
- **Three Kings Condominiums**
- **Town Pointe Condos**



The Canyons Hotels

- **Canyons Grand Summit Hotel**
 - **Red Pine Condominiums**
 - **Silverado Lodge**
 - **Sundial Lodge**
- **The Canyons is located just 5 miles from Park City.**



Park City & The Canyons Features

- **Ski Lift Tickets Available To The Canyons, Deer Valley & Park City.**
- **Round Trip Transfers From SLC**
- **Discount Rental Options are Black Tie Equipment Delivery or Ski N See store rental.**



Solitude Hotels

- **The Inn at Solitude**
- **Solitude Condominiums**



Snowbird Hotels

- **Cliff Lodge at Snowbird - East**
- **The Lodge at Snowbird**



Snowbird Equipment Rental

- **Christy Sports Equipment Rental**
 - **No Delivery Service offered to Snowbird Hotels.**



Lake Tahoe

- **South Shore – 56 Miles from the RNO**
- **North Shore**
 - **Northstar – 41 miles from RNO**
 - **Squaw Valley – 47 miles from RNO**
 - **Incline Village – 33 miles from RNO**
- **Reno – 3 miles from RNO**





Copyright © 2005 Microsoft Corp. and/or its suppliers. All rights reserved.

South Shore

- Embassy Suites Hotel Lake Tahoe Resort
- Forest Suites Resort
- Harrah's Casino Hotel Lake Tahoe
- Harvey's Resort and Casino Lake Tahoe
- Inn by the Lake South Lake Tahoe
- Lake Tahoe Horizon Casino Resort
- Lakeland Village Beach and Mountain Resort
- Marriott Grand Residence Club
- MontBlue (formerly Caesar's Tahoe)
- Tahoe Keys Resort
- The Ridge Tahoe



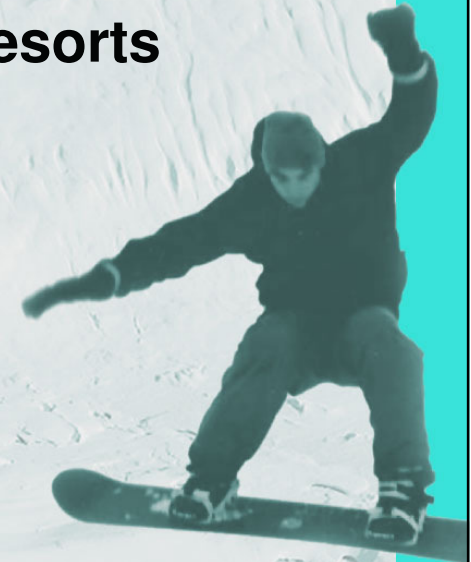
Heavenly Lake Tahoe Interchangeable Lift Ticket

- Heavenly
- Alpine Meadows
- Kirkwood
- Northstar at Tahoe
- Sierra at Tahoe
- Squaw Valley USA
 - The first day **MUST** be redeemed at Heavenly



North Shore Hotels

- **Best Western Truckee**
- **Hyatt Regency Lake Tahoe Resort, Spa & Casino**
- **Northstar at Tahoe**
- **Iron Horse Lodge by Tahoe Mountain Resorts**
- **Great Bear Lodge by Tahoe Mountain Resorts**
- **Resort at Squaw Creek**
- **Squaw Valley Lodge**
- **The Village at Squaw Valley**



Ski Tahoe North Interchangeable Lift Ticket

- **Alpine Meadows**
- **Northstar at Tahoe**
- **Squaw Valley**
- **Sugar Bowl**
- **Homewood**
- **Diamond Peak**
- **Mt. Rose**



New Mexico

- **Albuquerque**
- **Santa Fe**
- **Taos**
- **Angel Fire**





Copyright © 2005 Microsoft Corp. and/or its suppliers. All rights reserved.

New Mexico

- **Albuquerque – 5 miles from ABQ**
- **Santa Fe – 67 miles from ABQ**
- **Taos – 155 miles from ABQ**
- **Angel Fire – 158 miles from ABQ**



Albuquerque Hotel

- **Best Western Rio Grande Inn Albuquerque**
- **Hyatt Regency Albuquerque**
- **Hyatt Regency Tamaya Resort and Spa (Halfway between Albuquerque and Santa Fe)**



Santa Fe Hotels

- **Fort Marcy Hotel Suites**
- **The Hacienda at Santa Fe**
- **Hilton Santa Fe/Historic Plaza**
- **Hotel Santa Fe**
- **Inn and Spa at Loretto**
- **La Posada De Santa Fe Resort and Spa, a RockResort**
- **Santa Fe Courtyard by Marriott**



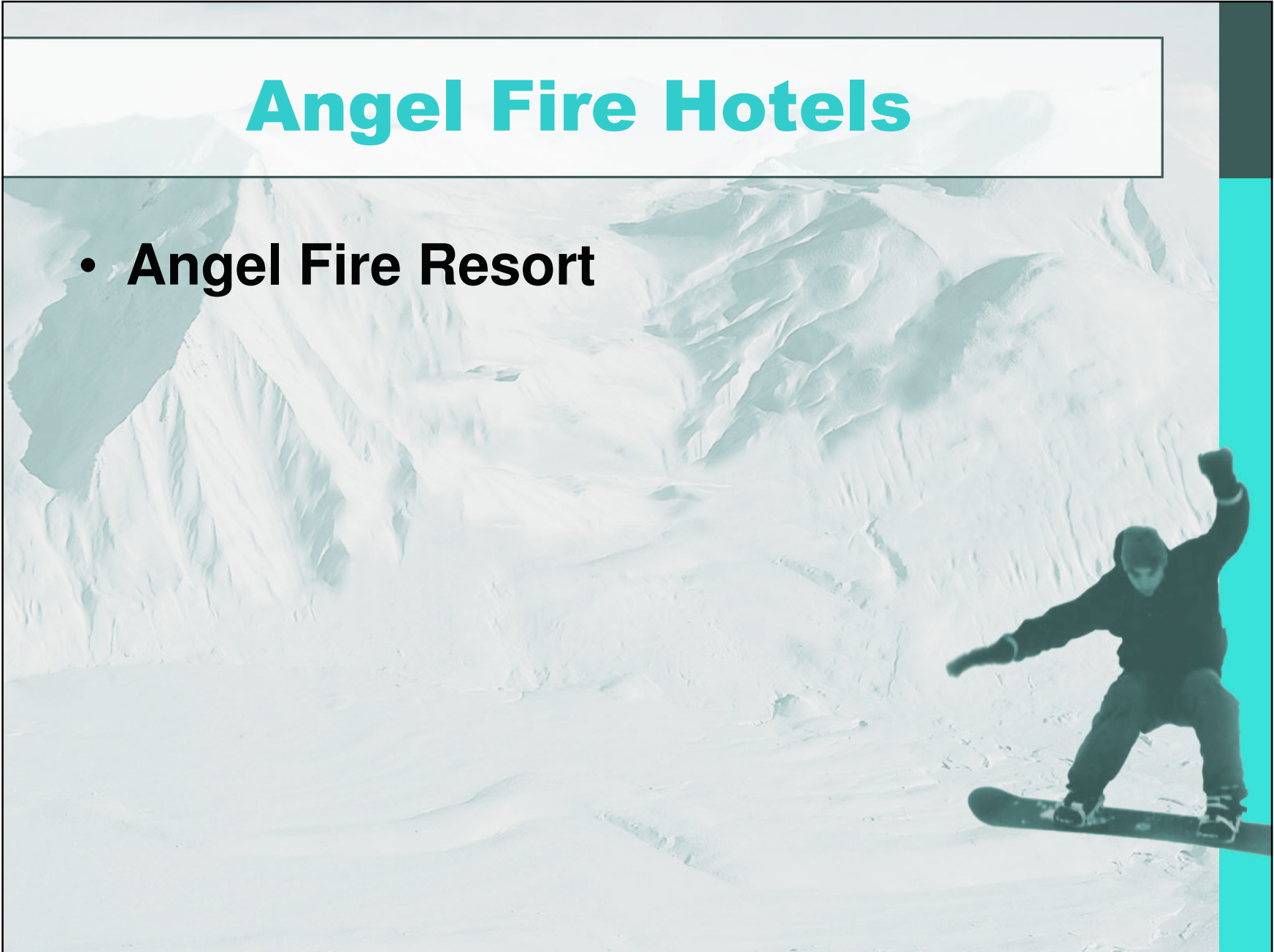
Taos Hotels

- **Comfort Suites**
- **Sagebrush Inn and Conference Center**



Angel Fire Hotels

- Angel Fire Resort



New Mexico Ski Lift Tickets

- Taos Ski Valley Lift Tickets
- Angel Fire Lift Tickets
- Ski Santa Fe lift tickets
- Sandia Peak lift tickets



Find out what they like

If you liked:

You'll also like:

Albuquerque	Salt Lake City	Santa Fe	Winter Park
Angel Fire	Solitude		
Aspen	Vail		
Banff	Taos		
Beaver Creek	The Canyons		
Breckenridge	Park City		
Copper Mountain	The Canyons	Steamboat	Steamboat
Crested Butte	Taos		
Heavenly	Vail	Copper Mountain	
Jackson Hole	Taos		
Keystone	Steamboat	Winter Park	The Canyons
Mammoth	Solitude	Angel Fire	
Northstar	Steamboat		

Find out what they like

If you liked:

Park City

Salt Lake City

Santa Fe

Snowbird

Snowmass

Steamboat

Solitude

Squaw Valley

The Canyons

Tremblant

Vail

Winter Park

Whistler

You'll also like:

Breckenridge

Albuquerque

Winter Park

Santa Fe

Albuquerque

Squaw Valley

Steamboat

Northstar

Big Sky

Keystone

Breckenridge

Angel Fire

Snowbird

Keystone

Copper Mountain

Steamboat

Angel Fire

Solitude

Breckenridge

Aspen

Salt Lake City

Albuquerque

Keystone

Vail

Breckenridge



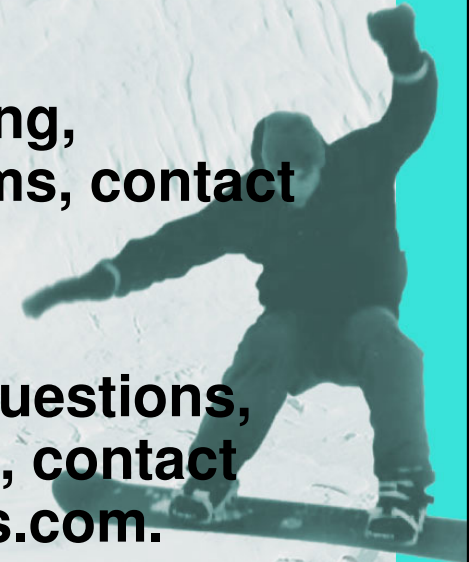
Additional Support

- For assistance call 1-877-543-7336
- For Spanish speaking assistance call 1-888-423-5683
- Groups: For 10 or more people, Contact our Group Department at 1-800-220-0833.
- Customer Support: For pre-travel assistance, please e-mail wncustomersupport@marktravel.com or 1-800-524-6442 ext. 5572



Additional Support

- **During or Post Travel Assistance:**
Call 1-800-775-7105
 - **Las Vegas During Travel Assistance:**
Call 1-888-216-0708
 - **Sales Team: For sales support, training, tradeshow, and travel agent programs, contact sales@southwestvacations.com**
- **Regional Marketing Teams: marketing questions, advertising, product, and pricing details, contact regionalmarketing@southwestvacations.com.**



Additional Support

**The Sales Team
1-800-524-6442**

- **Paul Jones – Ext. 5293
– Regional Sales Manager**
- **Sonia Mura-Bonilha – Ext. 5436
– Business Development Associate
Manager**



Thank you!



SOUTHWEST[®]
VACATIONS

A SYMBOL OF FREEDOM